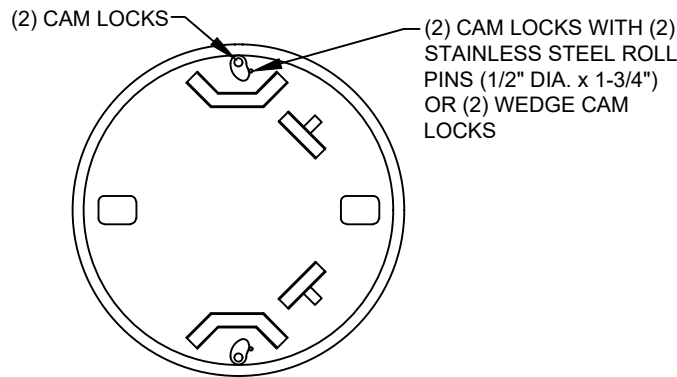
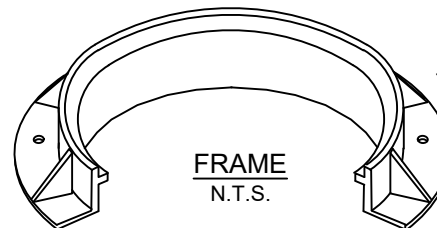
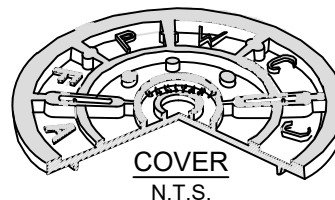
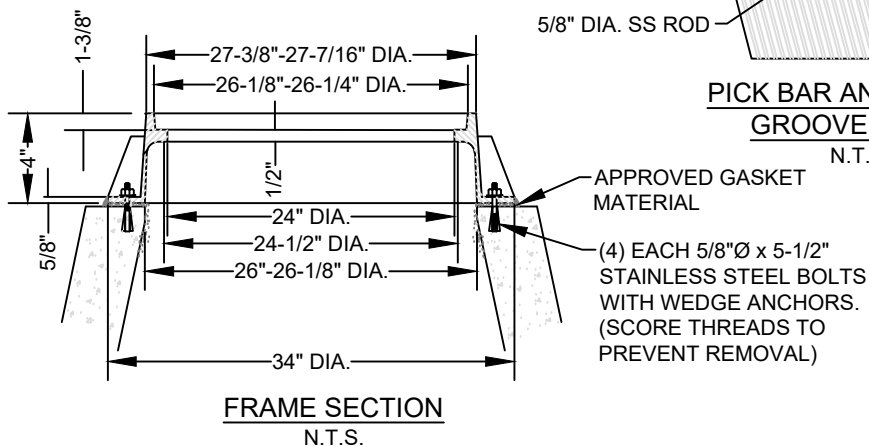
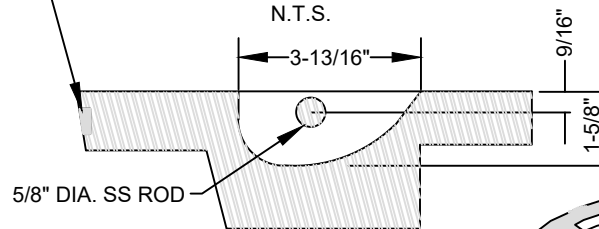
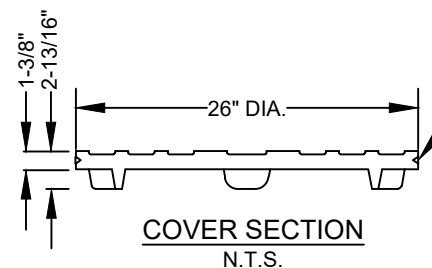
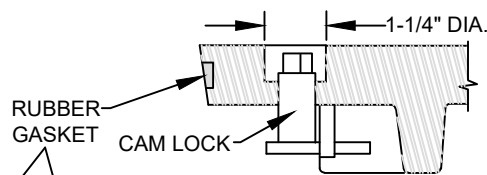


COVER FACE
N.T.S.



CAM LOCK DETAIL
N.T.S.



NOTES:

1. MANHOLE FRAME AND COVER TO BE MADE OF GRAY CAST IRON CONFORMING TO ASTM SPEC. A48-83, CLASS 35, MANUFACTURED BY SAME MANUFACTURER. ALL CASTINGS SHALL CONFORM TO THE SHAPE AND DIMENSIONS SHOWN. ALL CASTINGS SHALL BE CLEAN AND FREE FROM DEFECTS.
2. CASTINGS SHALL BE UNPAINTED AND SHALL HAVE THE LETTERS "PWC-FAY-NC" AND "SANITARY SEWER" CAST INTO COVER. LETTERS SHALL BE RAISED AND CLEARLY VISIBLE.
3. MANHOLE RING AND COVER SHALL WITHSTAND H-20 VEHICULAR TRAFFIC.
4. MINIMUM AVERAGE WEIGHT: PLUS OR MINUS 5% RING 155LBS., COVER 160LBS., UNIT 315LBS.
5. PERFORATED COVERS WILL NOT BE ALLOWED.
6. SUPPLY SOCKET FOR TURNING CAM LOCK MECHANISM. ONE SOCKET PER PROJECT.
7. USE OF GRADE RINGS ARE NOT ALLOWED, UNLESS APPROVED BY THE FAYPWC PROJECT COORDINATOR. FOR MANHOLES OUTSIDE OF YARD OR LANDSCAPE AREAS, THE USE OF GRADE RINGS ARE NOT ALLOWED.
8. FOR MANHOLES IN YARD OR LANDSCAPED AREAS, THE RING AND COVER SHALL BE SET TO FINISHED GRADE. THE USE OF GRADE RINGS ARE ALLOWED TO SET THE MANHOLE TO FINISHED GRADE. FOR GRADE RINGS 4" OR LESS, THE RING AND COVER SHALL BE ANCHORED TO THE CONE USING 5/8" DIAMETER STAINLESS STEEL BOLTS WITH WEDGE ANCHORS. FOR GRADE RINGS OVER 4", THE RING AND COVER SHALL BE ANCHORED TO THE GRADE RING, USING 5/8" DIAMETER x 5-1/2" STAINLESS STEEL BOLTS WITH WEDGE ANCHORS.
9. FOR OUTFALL AREAS, THE RING AND COVER SHALL BE SET A MINIMUM OF 18" ABOVE FINISHED GRADE, UNLESS OTHERWISE APPROVED.
10. THIS DETAIL IS TO BE USED ON ALL MANHOLES LOCATED OUTSIDE OF PAVED AREAS, UNLESS OTHERWISE APPROVED.
11. REFER TO FAYPWC STANDARD DETAIL S.17 FOR INSTALLATION OF VENT STACK.

**STANDARD NON-TRAFFIC AREA
MANHOLE RING AND COVER
WITH WIPER GASKET AND CAM LOCK**
N.T.S.

**FAYETTEVILLE
PUBLIC WORKS COMMISSION
FAYETTEVILLE, N.C.**



NO.	DATE	REVISION
1	07/09	REVISED NOTES ON FRAME SECTION/REVISED NOTE 3
2	07/17	ADDED NOTE ON WEDGE CAM LOCKS
3	01/18	UPDATED NOTES 7 AND 8

SHEET NO. 1 OF 1	DWG. NO. S.6	DWG. BY: FAYPWC
	DATE: JAN. 01, 2025	APPROVED BY: K.A.H.

**WATER RESOURCES
ENGINEERING DEPARTMENT**