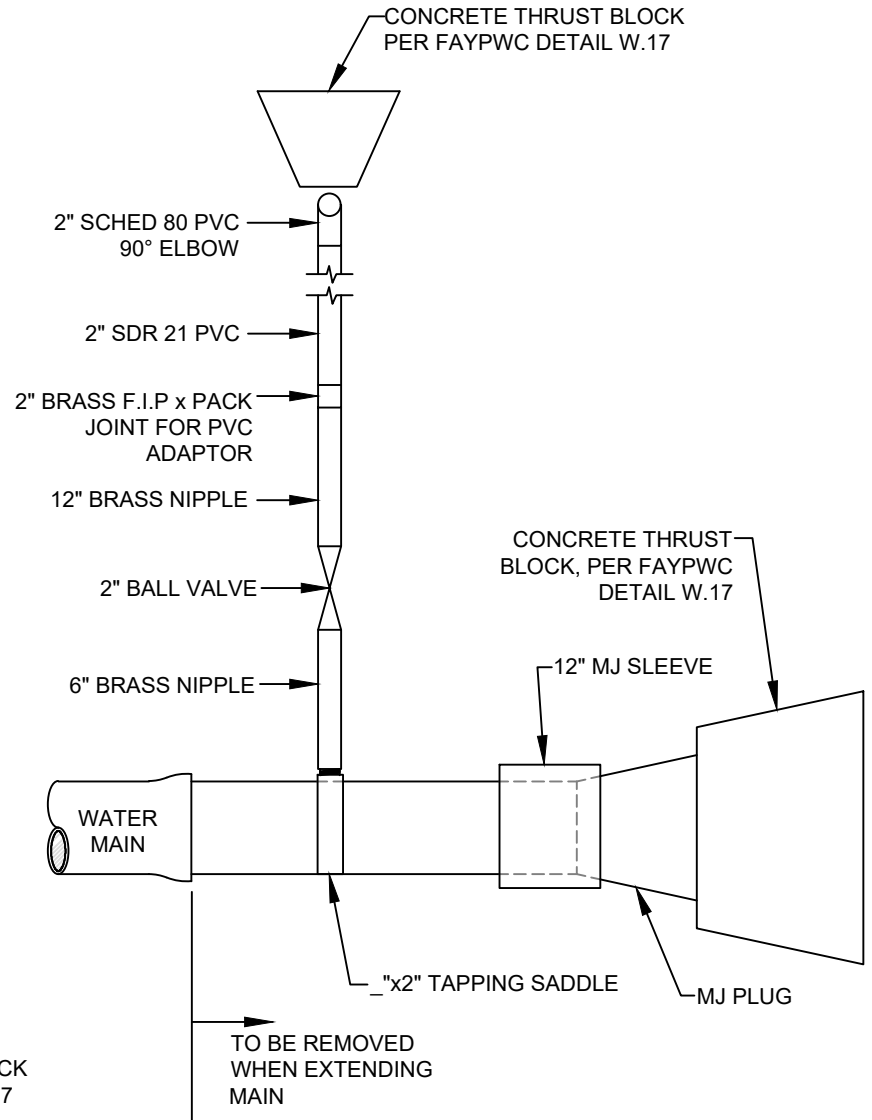
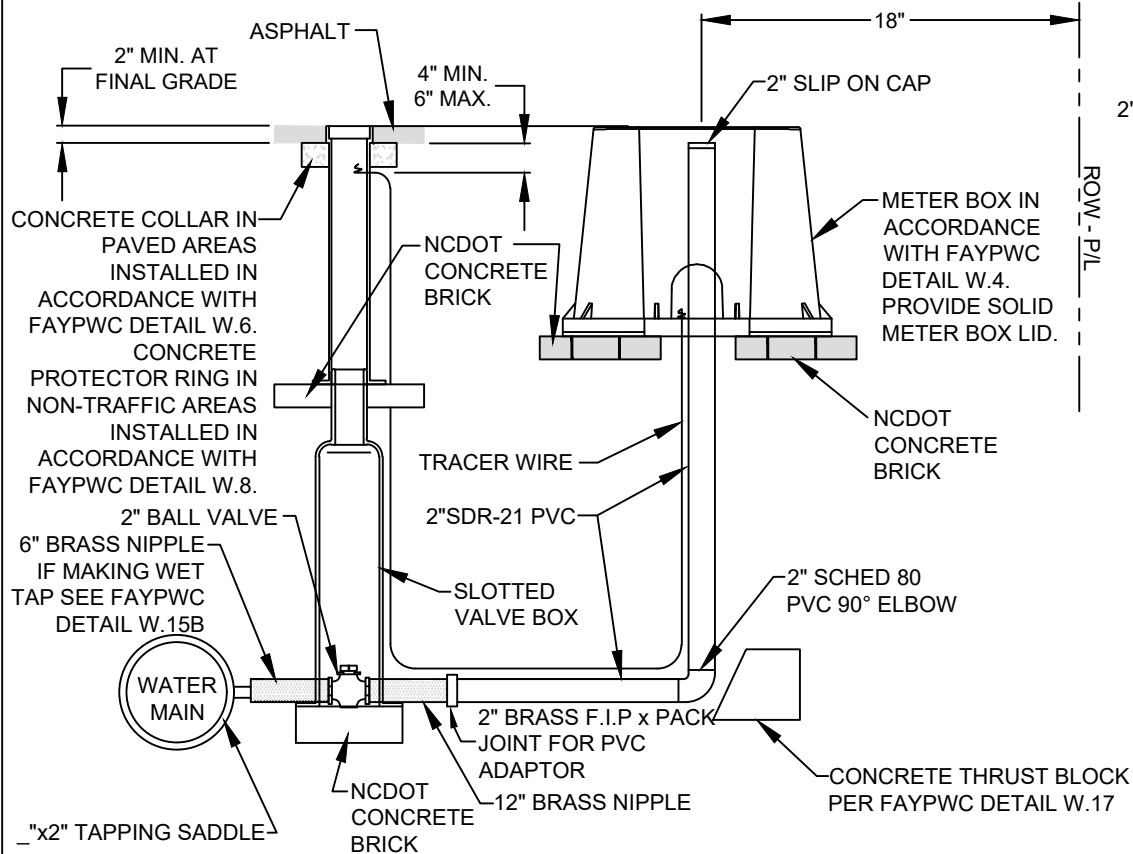


**NOTES:**

- |   |  |  |   |
|---|--|--|---|
| <p>1. ALL MATERIAL SHALL BE APPROVED BY FAYPWC.</p> <p>2. WHEN INSTALLED IN A PAVED AREA METER BOX SHALL BE SET 1/4" ABOVE FINISHED PAVEMENT GRADE AND PAVEMENT FEATHERED TO TOP OF BOX. COMPOSITE METER BOX (FAYPWC DETAIL W.4B) SHALL BE USED</p> | <p>3. IN PAVED AREAS. METER BOX SHALL BE IN ACCORDANCE WITH FAYPWC DETAILS. PROVIDE SOLID METER BOX LID.</p> <p>4. BLOW-OFF ASSEMBLY NOT TO BE RE-USED UNLESS APPROVED BY FAYPWC.</p> <p>5. REMOVE ENTIRE ASSEMBLY FROM BELL OF WATER MAIN PIPE WHEN EXTENDING THE</p> | <p>6. MAIN. CENTER 2" SDR-21 PIPE IN METER BOX.</p> <p>7. INSTALLATION SHALL BE INSPECTED AND APPROVED BY FAYPWC PROJECT COORDINATOR PRIOR TO BACKFILL.</p> <p>8. CONTRACTOR SHALL INSTALL TRACING WIRE INTO THE BOX. A MINIMUM OF 2' OF WIRE SHALL BE IN BOX.</p> | <p>9. VALVE BOX TO BE INSTALLED IN ACCORDANCE WITH FAYPWC DETAIL W.7.</p> |
|---|--|--|---|



<b>2" BLOW OFF</b> N.T.S.		
SHEET NO. 1 OF 1	DWG. NO. <b>W.15</b> DATE: JAN. 01, 2025	DWG. BY: FAYPWC APPROVED BY: K.A.H.

**FAYETTEVILLE  
PUBLIC WORKS COMMISSION  
FAYETTEVILLE, N.C.**

**WATER RESOURCES  
ENGINEERING DEPARTMENT**

NO.	DATE	REVISION
1	08/06	CHANGED FITTINGS TO SCHED 80
2	11/06	REVISED CONFIGURATION
3	07/17	REVISED NOTES