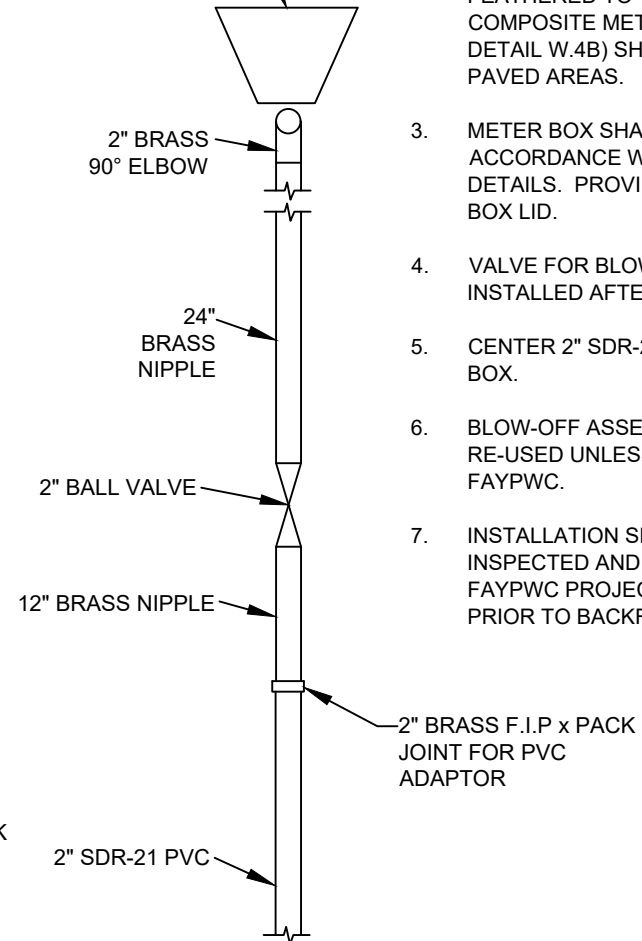


CONCRETE THRUST BLOCK PER FAYPWC DETAIL W.17



NOTES:

1. ALL MATERIALS SHALL BE APPROVED BY FAYPWC.
2. WHEN INSTALLED IN A PAVED AREA METER BOX SHALL BE SET 1/4" ABOVE FINISHED PAVEMENT GRADE AND PAVEMENT FEATHERED TO TOP OF BOX. COMPOSITE METER BOX (FAYPWC DETAIL W.4B) SHALL BE USED IN PAVED AREAS.
3. METER BOX SHALL BE IN ACCORDANCE WITH FAYPWC DETAILS. PROVIDE SOLID METER BOX LID.
4. VALVE FOR BLOW-OFF TO BE INSTALLED AFTER LAST SERVICE.
5. CENTER 2" SDR-21 PIPE IN METER BOX.
6. BLOW-OFF ASSEMBLY NOT TO BE RE-USED UNLESS APPROVED BY FAYPWC.
7. INSTALLATION SHALL BE INSPECTED AND APPROVED BY THE FAYPWC PROJECT COORDINATOR PRIOR TO BACKFILL.

2" BLOW OFF ON
2" WATER MAIN
N.T.S.

FAYETTEVILLE
PUBLIC WORKS COMMISSION
FAYETTEVILLE, N.C.



NO.	DATE	REVISION
1	07/17	REVISED NOTES

SHEET NO. 1 OF 1	DWG. NO. W.15C	DWG. BY: FAYPWC
	DATE: JAN. 01, 2025	APPROVED BY: K.A.H.

WATER RESOURCES
ENGINEERING DEPARTMENT