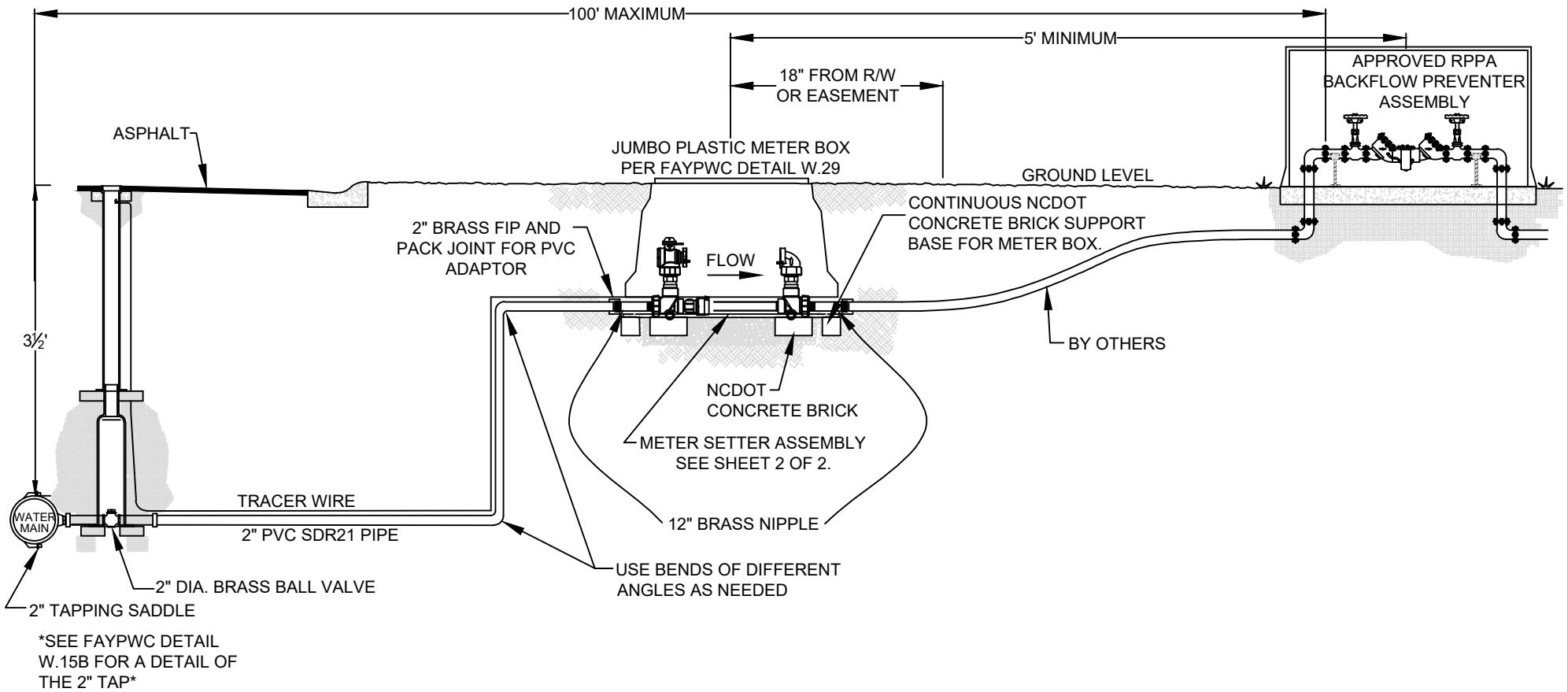
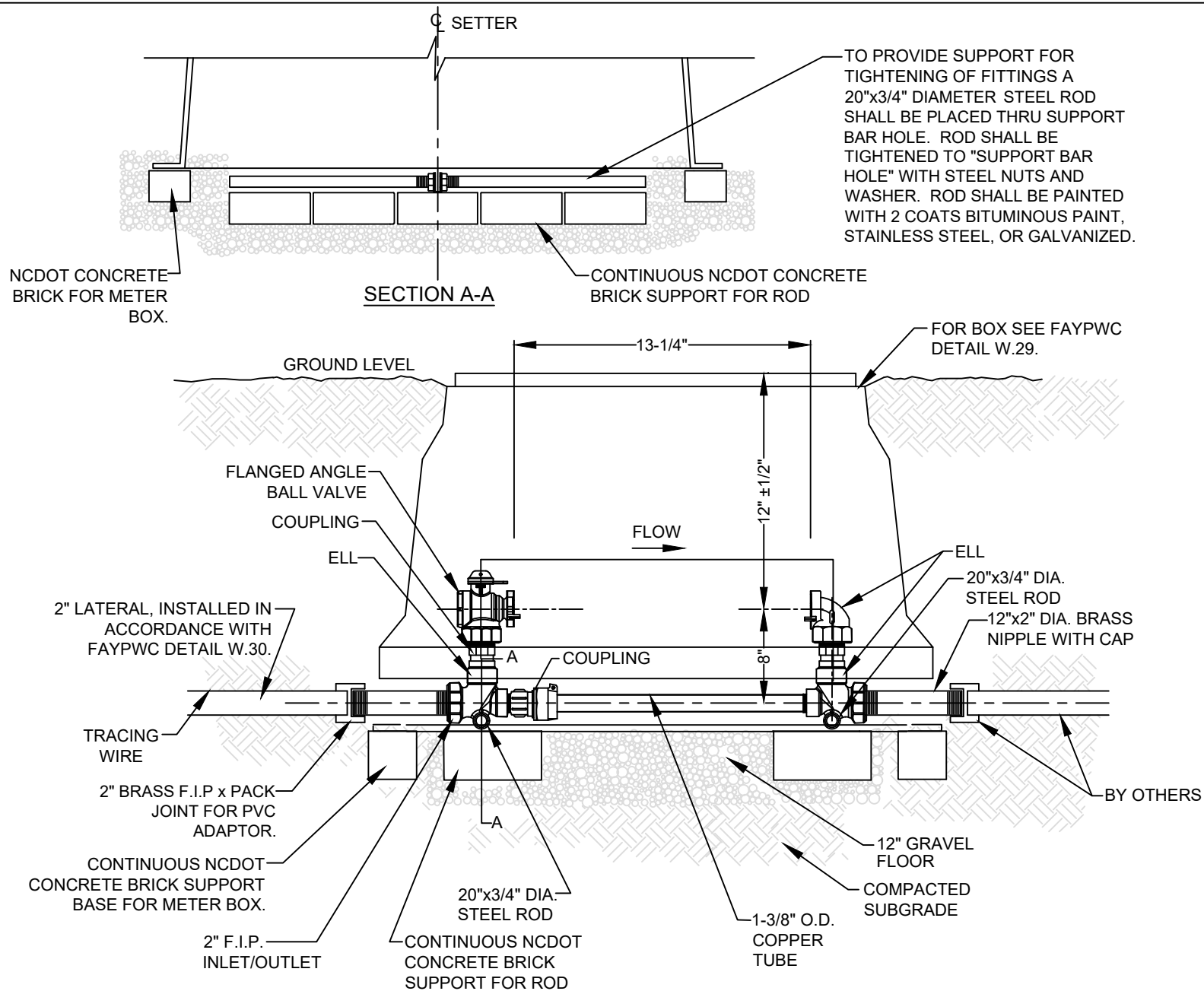



NOTES:

1. ALL MATERIALS SHALL BE APPROVED BY FAYPWC.
2. FOR USE WITH A 1-1/2" OR 2" IRRIGATION METER.
3. LOCATION OF BOX SHALL BE AS DETERMINED BY FAYPWC PROJECT COORDINATOR. IN NO CASE SHALL BOX BE INSTALLED CLOSER THAN 5' TO BUILDING.
4. MINIMUM 5' BETWEEN THE METER AND THE BACKFLOW PREVENTER. MAXIMUM 100' FROM THE MAIN TO THE BACKFLOW PREVENTER.
5. IF THE METER BOX IS LOCATED LESS THAN 5' AWAY FROM THE MAIN, THE 2" PIPING SHALL BE BRASS FROM THE TAP TO THE METER.
6. WATER LATERAL SHALL BE INSPECTED AND APPROVED BY FAYPWC PROJECT COORDINATOR PRIOR TO BACKFILL.
7. INSTALLATION SHALL BE IN ACCORDANCE WITH FAYPWC STANDARDS.
8. CONTRACTOR SHALL INSTALL TRACING WIRE INTO METER BOX. A MINIMUM OF 2' OF WIRE SHALL BE IN BOX.



2" IRRIGATION LATERAL N.T.S.		FAYETTEVILLE PUBLIC WORKS COMMISSION FAYETTEVILLE, N.C.			NO.	DATE	REVISION
					1	07/17	REVISED NOTES, ADDED SHEET 2
SHEET NO. 1 OF 2	DWG. NO.	W.28	DWG. BY:	FAYPWC	WATER RESOURCES ENGINEERING DEPARTMENT		
	DATE:	JAN. 01, 2025	APPROVED BY:	K.A.H.			



2" IRRIGATION LATERAL N.T.S.		FAYETTEVILLE PUBLIC WORKS COMMISSION FAYETTEVILLE, N.C.			NO.	DATE	REVISION
					1	07/17	ADDED SHEET 2 OF 2
SHEET NO. 2 OF 2	DWG. NO.	W.28	DWG. BY:	FAYPWC	WATER RESOURCES ENGINEERING DEPARTMENT		
	DATE:	JAN. 01, 2025	APPROVED BY:	K.A.H.			