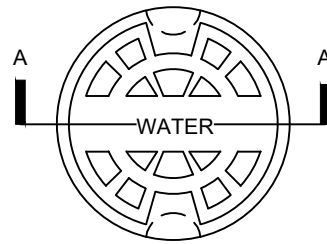
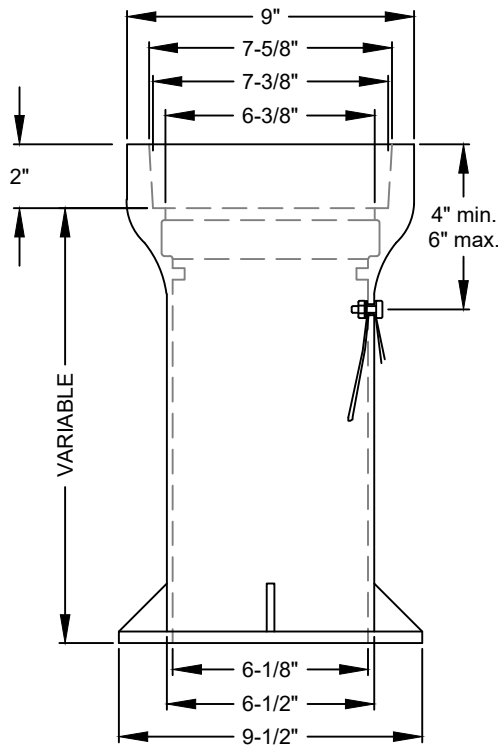


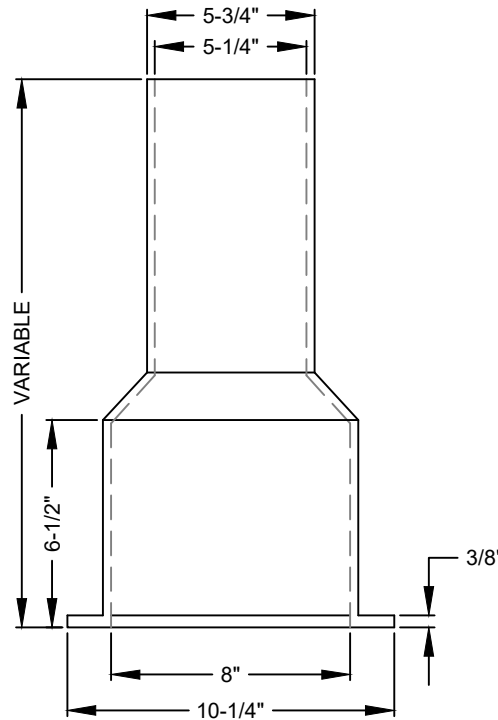
SECTION "A-A"



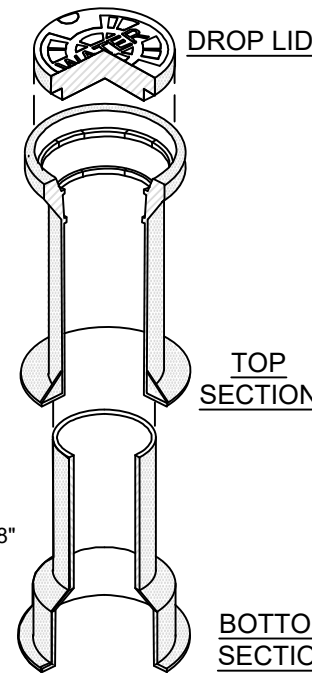
PLAN



TOP SECTION



BOTTOM





TOP SECTION

BOTTOM SECTION

NOTES:

1. VALVE BOX SHALL BE 3 PART SLIP-TYPE MANUFACTURED BY SIGMA CORPORATION (VB-462), TYLER UNION (6855 SERIES), STAR PIPE PRODUCTS (VB-0004), OR APPROVED EQUAL.
2. VALVE BOX SHALL BE 3-PIECE CLOSE GRAINED CAST IRON SLIP-TYPE VALVE BOX WITH A MINIMUM THICKNESS OF 3/16".
3. VALVE BOX SHALL HAVE RAISED LETTERS "WATER" CAST INTO COVER.
4. VALVE BOX SHALL HAVE 3/8" HOLE DRILLED IN TOP SECTION THRU WHICH A 1/4"x1-1/2" GALVANIZED BOLT SHALL BE USED TO SECURE A MINIMUM 12 GAUGE, SINGLE STRAND, COATED COPPER OR COPPER CLAD STEEL TRACER WIRE FOR NON-FERROUS PIPE. A 1/2" WASHER SHALL BE USED BETWEEN NUT AND INSIDE OF BOX. TIGHTEN HAND TIGHT.
5. SCREW TYPE VALVE BOXES ARE NOT ACCEPTABLE.
6. DIMENSIONS SHOWN VARY BASED UPON THE MANUFACTURER. ACTUAL DIMENSIONS SHALL BE APPROVED BY FAYPWC.
7. VALVE BOX SECTIONS ARE REQUIRED. THE USE OF PIPE IN LIEU OF VALVE BOX SECTIONS SHALL NOT BE PERMITTED.
8. TRACING WIRE SHALL BE INSTALLED OUTSIDE OF BOX.
9. REFER TO FAYPWC DETAIL W.6 FOR INSTALLATION REQUIREMENTS.

VALVE BOX N.T.S.			FAYETTEVILLE PUBLIC WORKS COMMISSION FAYETTEVILLE, N.C.			NO.	DATE	REVISION
						1	07/09	ADDED NOTES 7, 8, AND CLARIFIED NOTES
SHEET NO. 1 OF 1	DWG. NO.	W.7	DWG. BY: FAYPWC			2	01/14	REVISED NOTES 1, 4, 6
	DATE:	JAN. 01, 2025	APPROVED BY: K.A.H.					